



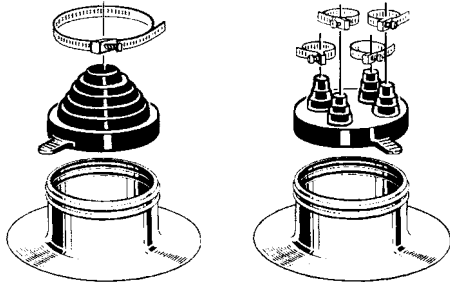
**ROOF FLASHINGS**  
Silicone – Deck Mate®



Suitable for extremely high and low temperature applications; service temperature range -100°F to 500°F. Works with any corrugated metal roof. Aluminum flanged base bends to fit irregularities. Forms watertight seal with proper sealant and standard fasteners. Includes clamp.

No.	Pipe OD In.	OA Ht. In.	Base Wdth. In.	Pkg. Qty.
DM-03	1/4 to 4	4	8	15
DM-04	3 to 6	5	10	10
DM-05	4 to 7	5	11	10
DM-06	5 to 9	6	12	10
DM-07	6 to 11	6	14	10
DM-08	7 to 13	6	17	5

**ROOF FLASHINGS**  
Alumi-Flash®



AFSMC-126

AFSMC-212

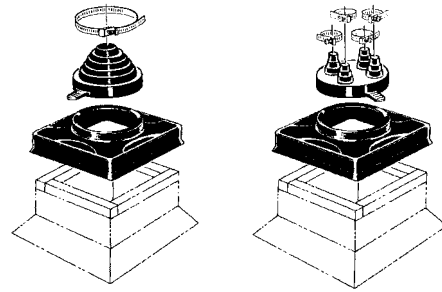
Molded black EPDM 8" diameter cap resists weather and sunlight exposure. Flashing base measures 14" diameter x 4" H; features Weather-Tite pressure seal with 2 beads formed into collar which connect to double grooves inside cap. Base must be roofed in. Service temperature -60°F to 250°F. Resistant to ozone and ultraviolet.

No.	Cap Style	Pipe Config.
AFSMC-126	C-126	(1) 2" to 6"
AFSMC-212	C-212	(2) 3/8" to 1"; (2) 1" to 2"

**TOM BARROW CO.**  
**Your Single Source Solution!**

**PIPE ROUTERS**

**Curb Mounted – Pipe Portal®**



PSSMC-126

PSSMC-212

Leakproof, weathertight pipe router for new construction. Mounts vertically or horizontally. ABS plastic roof curb cover with laminated acrylic coating for ozone/UV resistance. Molded sealing rings on collared opening mate with grooves in black EPDM rubber cap. Swivel action clamp. Curb cover service temp. -40°F to 160°F; rubber cap -60°F to 270°F. Curb cover measures 8" wide at top, 14" wide at base. 4" height.

No.	Cap Style	Pipe Config.	Curb Size In.
PSSMC-126	C-126	(1) 2" to 6"	12 x 12
PSSMC-212	C-212	(2) 3/8" to 1"; (2) 1" to 2"	12 x 12

**PIPE BOOTS**  
Neoprene



Designed for use with Pipe Portal® systems. For single-pipe applications on synthetic rubber, hot asphalt or cold tar pitch 1-ply roofs. Conical shape provides secure seal. Black.

No.	Size	Pipe Dia. In.	Body Thick. Mils
PBNM	Medium	1 to 6	60

**PIPE CLAMPS**  
Snaplock



For use on roof, wall and floor penetrations. Features stainless steel band and housing with zinc plated steel bridge.

No.	Dia. In.		Lgth. In.	Screw Sz. In.
	Min.	Max.		
LS188/MO06	1.75	15	48	.3125