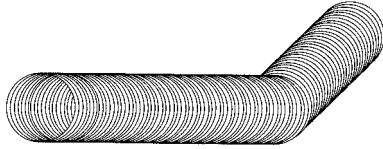




CROWN
PRODUCTS COMPANY, INC.
FLEXIBLE DUCT
Flexell – Model 105

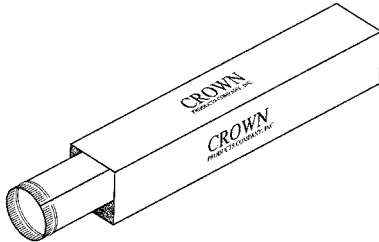


For use in bathroom exhaust and similar applications. Constructed from .005" thick aluminum alloy with triple-lock seams. -60°F to +600°F temperature rating; 5500 FPM velocity rating. 8-ft. length. UL 181 Class 0 listed.

Note: Not recommended for range hood applications.

No.	Dia. In.
T-FIN-04	4
T-FIN-06	6
T-FIN-08	8
T-FIN-10	10
T-FIN-12	12

SNAPLOCK PIPE
26 Ga.



Galvanized steel construction.

No.	Lgth. In.	Dia. In.	Pkg. Qty. Ft.
SL PIPE-04-26-5	60	4	50
SL PIPE-06-26-5	60	6	50
SL PIPE-08-26-5	60	8	50
SL PIPE-10-26-5	60	10	30
SL PIPE-12-26-5	60	12	30
SL PIPE-14-26-5	60	14	30

Our daily objective is to meet and greet our customers in a prompt, kind and courteous manner.



SNAPLOCK PIPE

Packed 10 pieces per bundle.



No.	Gauge	Lgth. In.	Dia. In.
SNAPLOCK-04	Standard	60	4
SNAPLOCK-05	Standard	60	5
SNAPLOCK-06	Standard	60	6
SNAPLOCK-07	Standard	60	7
SNAPLOCK-08	Standard	60	8
SNAPLOCK-09	Standard	60	9
SNAPLOCK-10	Standard	60	10
SNAPLOCK-12	26	60	12
SNAPLOCK-14	26	60	14
SNAPLOCK-16	26	36	16
SNAPLOCK-18	26	36	18
SNAPLOCK-20	26	36	20

ELBOWS

90° – Adjustable

No.	Dia. In.	Gauge	Pkg. Qty.
ELLS-04	4	Standard	12
ELLS-05	5	Standard	12
ELLS-06	6	Standard	12
ELLS-07	7	Standard	12
ELLS-08	8	Standard	12
ELLS-09	9	Standard	12
ELLS-10	10	Standard	12
ELLS-12	12	26	4
ELLS-14	14	26	4
ELLS-16	16	26	4
ELLS-18	18	26	4
ELLS-20	20	26	4

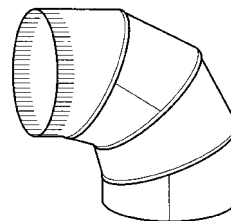


CROWN
PRODUCTS COMPANY, INC.

ELBOWS

90° – Adjustable – #111

Galvanized steel construction.



No.	Dia. In.	Ga.	Ctn. Qty.
ELLS-04-26	4	26	12
ELLS-06-26	6	26	12
ELLS-08-26	8	26	12
ELLS-10-26	10	26	8
ELLS-12-26	12	26	4
ELLS-14-26	14	26	4
ELLS-16-24	16	24	4
ELLS-18-24	18	24	4



REDUCERS
Snaplock

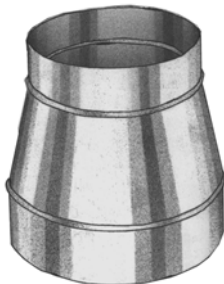


No crimp.

No.	Gauge	Dia. In.
SNAPRED-08/06	30	8 x 6
SNAPRED-10/08	30	10 x 8
SNAPRED-12/10	28	12 x 10
SNAPRED-14/12	28	14 x 12
SNAPRED-15/14	28	15 x 14
SNAPRED-16/14	28	16 x 14



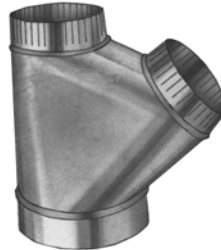
REDUCERS
Snaplock – 26 Ga.



No.	Dia. In.
SNAPRED-08/06-26	8 x 6
SNAPRED-10/08-26	10 x 8
SNAPRED-12/10-26	12 x 10



WYES
Snaplock

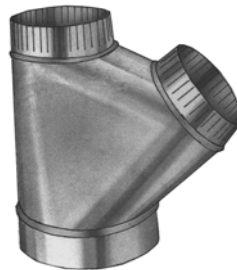


Full flow design.

No.	Gauge	Dia. In.
SNAPWY-12/10/10	28	12 x 10 x 10
SNAPWYE-10/8/8	28	10 x 8 x 8
SNAPWYE-8/6/6	30	8 x 6 x 6



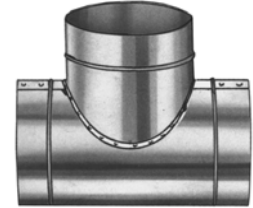
WYES
Snaplock – 26 Ga.



No.	Dia. In.
SNAPWYE-12/10/10-26	12 x 10 x 10
SNAPWYE-10/8/8-26	10 x 8 x 8
SNAPWYE-8/6/6-26	8 x 6 x 6



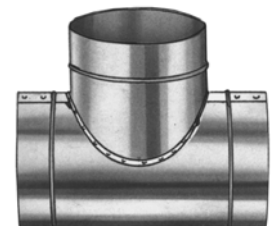
TEES
Snaplock



No.	Gauge	Dia. In.
SNAPTEE-06	30	6
SNAPTEE-08	30	8
SNAPTEE-10	28	10
SNAPTEE-12	28	12



TEES
Snaplock – 26 Ga.



No.	Dia. In.
SNAPTEE-06-26	6
SNAPTEE-08-26	8
SNAPTEE-10-26	10
SNAPTEE-12-26	12

MANUFACTURERS'
CATALOGS

We shall be glad to send manufacturers' catalogs and other available publications and data on request.