

MULTI**PRO**

YOUR COMPLETE COMFORT SOLUTION



- DC INVERTER-DRIVEN TECHNOLOGY
- SMART TEMPERATURE CONTROL
- COOLING UP TO 129°F
- HEATING DOWN TO -22°F
- IDEAL FOR RESIDENTIAL AND COMMERCIAL SPACES

THE MULTIPRO FOR THE ULTIMATE IN COMFORT & FLEXIBILITY.

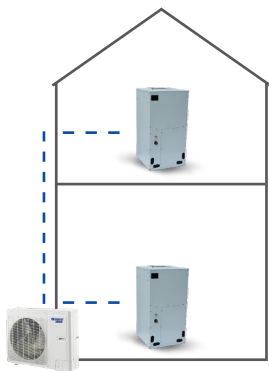
The GREE MultiPRO is ideal for handling today's challenging spaces. With the outdoor unit's small footprint and long piping capabilities, the system provides optimal installation flexibility and efficiency. Connect to a conventional-style multi-position air handler, high wall, or any of the other 7 ducted and ductless indoor unit options. With ULTRA heating & cooling options, the MultiPRO can also handle up to 10 zones with just one outdoor unit.

- Up to 10 indoor units with each outdoor unit
- CAN-BUS communication network technology
- Ultra-long piping: up to 985 ft.
- Automatic address setting
- Small installation footprint
- Whisper-quiet operation
- Advanced torque control
- Sensorless DC inverter fan motor
- High efficiency, digital PFC control
- Wide operating range
- Compressor oil storage, separation (2-stage, balance control technology)
- Automatic fault detection

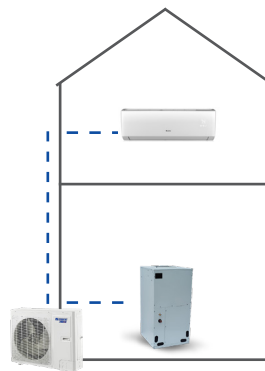


MULTI PRO		GMV-24WL/C-T(U)	GMV-28WL/C-T(U)	GMV-36WL/C-T(U)	GMV-48WL/C-T(U)	GMV-60WL/C-T(U)	GMV-36WL/B-T(U)	GMV-48WL/B-T(U)	
System Type						HEAT PUMP		ULTRA HEAT MODELS	
SYSTEM PERFORMANCE - FOR MORE DETAIL, SEE SALES MANUALS AT GREECOMFORT.COM									
Cooling Capacity	Btu/h	24000	28000	37500	48000	60000	36000	48000	
Heating Capacity	Btu/h	28000	30000	42000	54000	64000	45000	54000	
Cooling Temperature Range (Rated)	°F	23 - 118	23 - 118	23 - 118	23 - 118	23 - 118	50 - 129	50 - 129	
Heating Temperature Range (Rated)	°F	-4 - 81	-4 - 81	-4 - 81	-4 - 81	-4 - 81	-22 - 81	-22 - 81	
SEER (Non-Ducted / Ducted)		18 / 18	18 / 18	22 / 19.5	22 / 19.5	21 / 19.5	20.5 / 16.5	20 / 16.5	
EER @ 95°F (Non-Ducted / Ducted)		11 / 11	11 / 11	11.5 / 11.5	11.5 / 11	11 / 10.5	13 / 11.3	12.5 / 9.5	
HSPF (Non-Ducted / Ducted)		10 / 10	10 / 9	11 / 10.5	10.8 / 10.6	11 / 10.5	11.7 / 10.3	11 / 10.2	
COP @ 47°F (Non-Ducted / Ducted)		2.99 / 3.01	3.16 / 3.16	4.24 / 3.57	4.04 / 3.31	3.89 / 3.58	4.00 / 3.47	3.90 / 3.46	
COP @ 5°F (Non-Ducted / Ducted)		2.4 / 1.48	2.34 / 1.48	1.98 / 1.95	1.99 / 1.92	2.03 / 1.98	1.50 / 1.50	1.50 / 1.50	
Unit Dimension (WxDxH)	in	38 5/8 x 14 3/16 x 31 1/8	38 5/8 x 14 3/16 x 31 1/8	35 7/16 x 13 3/8 x 52 15/16	35 7/16 x 13 3/8 x 52 15/16	37 x 12 5/8 x 56 5/16	35 3/8 x 13 3/8 x 53	35 3/8 x 13 3/8 x 53	
Package Dimension (WxDxH)	in	43-3/16 x 18 3/4 x 36 7/8	43-3/16 x 18 3/4 x 36 7/8	39 1/4 x 18 x 59 1/16	39 1/4 x 18 x 59 1/16	40 5/8 x 17 1/16 x 62 1/4	39 5/16 x 18 1/16 x 59 5/8	39 5/16 x 18 1/16 x 59 5/8	
Weight (Net / Gross)	lbs	176/198	176/198	246/273	246/273	273/299	296/320	296/320	
REFRIGERANT PIPING									
Max. Length from ODU to IDU (Equivalent)	ft	394	394	492	492	492	492	492	
Max. Length from First Branch to IDU	ft	131	131	131	131	131	131	131	
Max. Height Difference ODU to IDU (High/Low)		98/98	98/98	164/131	164/132	164/133	164/134	164/131	
Max. Height Difference IDU to IDU	ft	33	33	49	49	49	49	49	
ELECTRICAL									
Power Supply		208-230V / 1Ph / 60Hz							
MCA	amps	21	21	28.5	33	34.5	37	37	
MOCP	amps	25	30	35	40	40	50	50	
Main Power Wire Size	AWG	Per Local Code							
Interconnecting Wire Size	AWG	18/2 Stranded. Shielding recommended.							
LIMITED WARRANTY									
5 Years Parts 7 Years Compressor Residential & Commercial									

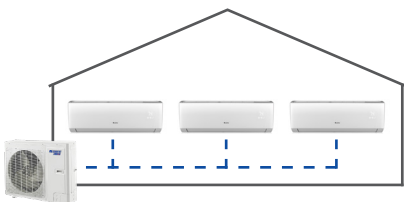
COMMON CONFIGURATIONS



House
2 X
Vertical Air Handlers



House
Vertical Air Handler
+
High Wall



Coffee Shop
3 X
High Walls



Whole Home Solution
1 X
Vertical Air Handler

9 INDOOR UNITS TO CHOOSE

- Wall Mount
- Multi-Position Air Handler
- Horizontal Slim Ducted
- 360 Compact Ceiling Cassette
- 360 Standard Ceiling Cassette
- One-Way Cassette
- Two-Way Cassette
- Console
- Floor Ceiling



Slim compact design hangs inconspicuously on the wall and mixes with most interior designs.

WALL MOUNT

MODEL		GMV-ND06G/B4B-T(U)	GMV-ND07G/B4B-T(U)	GMV-ND09G/B4B-T(U)	GMV-ND12G/B4B-T(U)	GMV-ND14G/B4B-T(U)
System Type		HEAT PUMP				
SYSTEM PERFORMANCE (Non-Ducted Indoor Units)						
Cooling Capacity (Min-Max)	Btu/h	6000	7500	9500	12000	15000
Heating Capacity (Min-Max)	Btu/h	6000	8500	10500	13500	17000
MCA	A	1	1	1	1	1
MOP	A	15	15	15	15	15
Air Flow (Min-Max)	CFM	294 / 177	294 / 177	294 / 177	371 / 188	500 / 294
Sound Pressure Level (Min-Max)	dB(A)	35 / 30	35 / 30	35 / 30	38 / 31	43 / 37
Condensate Drain Size (OD)	in	13/16	13/16	13/16	13/16	13/16
Unit Dimension (WxHxD)	in	33 1/4 x 8 1/4 x 11 3/8				
Package Dimension (WxHxD)	in	38 7/16 x 14 15/16 x 11 1/16				
Weight (Net / Gross)	lbs	23.5/27.5				
Line Set Size (Liquid - Gas)	in	1/4 - 3/8	1/4 - 3/8	1/4 - 3/8	1/4-1/2	1/4-1/2
Power Supply		208-230V / 1Ph / 60Hz				
LIMITED WARRANTY		5 Years Parts, 7 Years Compressor – Residential & Commercial				

MODEL		GMV-ND18G/B4B-T(U)	GMV-ND24G/B4B-T(U)	GMV-ND30G/B4B-T(U)	GMV-ND36G/B4B-T(U)	
System Type		HEAT PUMP				
SYSTEM PERFORMANCE (Non-Ducted Indoor Units)						
Cooling Capacity (Min-Max)	Btu/h	18000	24000	30000	32500	
Heating Capacity (Min-Max)	Btu/h	20000	25500	34000	36000	
MCA	A	1	1	1	1	
MOP	A	15	15	15	15	
Air Flow (Min-Max)	CFM	647 / 383	706 / 383	912 / 471	971 / 530	
Sound Pressure Level (Min-Max)	dB(A)	43 / 37	44 / 37	49 / 40	52 / 40	
Condensate Drain Size (OD)	in	13/16	13/16	13/16	13/16	
Unit Dimension (WxHxD)	in	42 7/16 x 12 13/16 x 9 11/16		53 1/8 x 10 3/16 x 12 13/16		
Package Dimension (WxHxD)	in	47 3/8 x 16 1/4 x 13 3/4		58 7/8 x 16 9/16 x 14 1/2		
Weight (Net / Gross)	lbs	35.5/42		41/52		
Line Set Size (Liquid - Gas)	in	3/8-5/8	3/8-5/8	3/8-5/8	3/8-5/8	
Power Supply		208-230V / 1Ph / 60Hz				
LIMITED WARRANTY		5 Years Parts, 7 Years Compressor – Residential & Commercial				



Installation space for this unit is small, allowing easy installation and maintenance. This unit installs like a traditional air handler, using traditional ducting methods. It can be installed in vertical up-flow, horizontal-right, and horizontal-left applications.

MULTI-POSITION AIR HANDLER

MODEL	GMV-ND12A/B-T(U)	GMV-ND18A/B-T(U)	GMV-ND24A/B-T(U)	GMV-ND30A/B-T(U)
System Type	HEAT PUMP			
Cooling Capacity - Nominal	12000	18000	24000	30000
Heating Capacity - Nominal	13500	20000	27000	34000
MCA	3.0	3.0	3.0	4.0
MOP	15	15	15	15
Air Flow (Min-Max)	420 / 300	650 / 300	880 / 690	910 / 710
External Static Pressure (Default/Min-Max)	0.2 / 0-1.0	0.2 / 0-1.0	0.2 / 0-1.0	0.2 / 0-1.0
Sound Pressure Level (Min-Max)	36 / 33	39 / 33	43 / 40	44 / 40
Condensate Drain Size	1	1	1	1
Unit Dimension (WxDxH)	18 1/8 x 21 1/4 x 43 1/2	18 1/8 x 21 1/4 x 43 1/2	18 1/2 x 21 1/4 x 43 1/2	18 1/2 x 21 1/4 x 43 1/2
Package Dimension (WxDxH)	20 3/8 x 24 3/8 x 46 1/8	20 3/8x24 3/8x46 1/8	20 3/8 x 24 3/8 x 46 1/8	20 3/8 x 24 3/8 x 46 1/8
Weight (Net / Gross)	119/130	121/132	123/134	123/134
Line Set Size (Liquid - Gas)	1/4 - 3/8	1/4 - 1/2	3/8 - 5/8	3/8 - 5/8
Power Supply	208-230V / 1Ph / 60Hz			
LIMITED WARRANTY	5 Years Parts, 7 Years Compressor – Residential & Commercial			

MODEL	GMV-ND36A/B-T(U)	GMV-ND42A/B-T(U)	GMV-ND48A/B-T(U)	GMV-ND60A/B-T(U)
System Type	HEAT PUMP			
Cooling Capacity - Nominal	36000	42000	48000	60000
Heating Capacity - Nominal	40000	47000	54000	66000
MCA	5.0	5.0	8.7	8.7
MOP	15	15	15	15
Air Flow (Min-Max)	1230 / 970	1260 / 1000	1800 / 1500	1820 / 1530
External Static Pressure (Default/Min-Max)	0.2 / 0-1.0	0.2 / 0-1.0	0.2 / 0-1.0	0.2 / 0-1.0
Sound Pressure Level (Min-Max)	45 / 42	46 / 43	50 / 48	51 / 49
Condensate Drain Size	1	1	1	1
Unit Dimension (WxDxH)	21 1/4 x 21 1/4 x 48 1/4	21 1/4 x 21 1/4 x 48 1/4	24 3/4 x 21 1/4 x 57	24 3/4 x 21 1/4 x 57
Package Dimension (WxDxH)	26 x 23 3/4 x 50 3/8	26 x 23 3/4 x 50 3/8	27 5/16 x 26 x 59 3/8	27 5/16 x 26 x 59 3/8
Weight (Net / Gross)	159/170	159/170	198/216	198/216
Line Set Size (Liquid - Gas)	3/8 - 5/8	3/8 - 5/8	3/8 - 5/8	3/8 - 5/8
Power Supply	208-230V / 1Ph / 60Hz			
LIMITED WARRANTY	5 Years Parts, 7 Years Compressor – Residential & Commercial			

ELECTRIC HEATER KITS

HEATER MODEL NUMBERS	DESCRIPTION	AIR HANDLER COMBINATION
FLEXXHTR5KW	5 kW	GMV-ND09A/B-T(U) GMV-ND12A/B-T(U) GMV-ND18A/B-T(U)
FLEXXHTR5KW	5 kW	
FLEXXHTR8KW	8 kW	GMV-ND24A/B-T(U) GMV-ND30A/B-T(U) GMV-ND36A/B-T(U)
FLEXXHTR10KW	10 kW	
FLEXXHTR5KW	5 kW	
FLEXXHTR8KW	8 kW	GMV-ND36A/B-T(U) GMV-ND42A/B-T(U) GMV-ND48A/B-T(U)
FLEXXHTR10KW	10 kW	
FLEXXHTR15KW	15 kW	GMV-ND54A/B-T(U) GMV-ND60A/B-T(U)
FLEXXHTR20KW	20 kW	



Compact and powerful, the high static slim duct offers the ultimate in flexibility and discretion. Concealed above a suspended ceiling or within open closet spaces to deliver conditioned air via extended ducting and suitable ceiling or wall grilles.

HORIZONTAL SLIM DUCTED

MODEL		GMV-ND07PHS/B-T(U)	GMV-ND09PHS/B-T(U)	GMV-ND12PHS/B-T(U)	GMV-ND15PHS/B-T(U)	GMV-ND18PHS/B-T(U)
System Type		HEAT PUMP				
Cooling Capacity - Nominal	Btu/h	7500	9500	12000	15000	18000
Heating Capacity - Nominal	Btu/h	8500	10500	13500	17000	20000
MCA	A	1	1	1	1	1
MOP	A	15	15	15	15	15
Air Flow (Min-Max)	CFM	324 / 235	324 / 235	353 / 247	500 / 353	589 / 412
External Static Pressure (Default/Min-Max)	In W.c.	0.24/0-0.6	0.24/0-0.6	0.24/0-0.6	0.24/0-0.6	0.36/0-0.8
Sound Pressure Level (Min-Max)	dB(A)	35 / 31	35 / 31	36 / 32	40 / 34	42 / 35
Condensate Drain Size	in	1	1	1	1	1
Unit Dimension (WxDxH)	in	27 9/16 x 27 9/16 x 11 13/16	27 9/16 x 27 9/16 x 11 13/16	39 3/8 x 27 9/16 x 11 13/16	39 3/8 x 27 9/16 x 11 13/16	39 3/8 x 27 9/16 x 11 13/16
Package Dimension (WxDxH)	in	35 5/16 x 32 x 14 3/16	35 5/16 x 32 x 14 3/16	47 7/16 x 32 x 14 3/16	47 7/16 x 32 x 14 3/16	47 7/16 x 32 x 14 3/16
Weight (Net / Gross)	lbs	73/86	73/86	94/108	94/108	94/108
Line Set Size (Liquid - Gas)	in	1/4 - 3/8	1/4 - 1/2	1/4 - 1/2	1/4 - 1/2	3/8 - 5/8
Power Supply		208-230V / 1Ph / 60Hz				

LIMITED WARRANTY

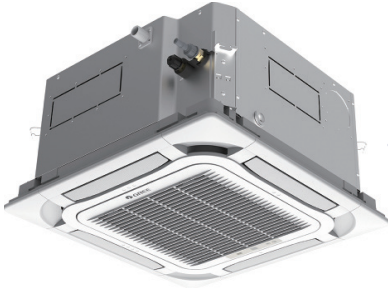
5 Years Parts, 7 Years Compressor – Residential & Commercial

MODEL		GMV-ND22PHS/B-T(U)	GMV-ND24PHS/B-T(U)	GMV-ND30PHS/B-T(U)	GMV-ND36PHS/B-T(U)	GMV-ND42PHS/B-T(U)
System Type		HEAT PUMP				
Cooling Capacity - Nominal	Btu/h	22000	24000	30000	36000	42000
Heating Capacity - Nominal	Btu/h	24000	27000	34000	40000	47000
MCA	A	1	1.2	1.7	1.7	1.7
MOP	A	15	15	15	15	15
Air Flow (Min-Max)	CFM	589 / 412	736 / 559	1059 / 736	1177 / 824	1177 / 824
External Static Pressure (Default/Min-Max)	In W.c.	0.36/0-0.8	0.36/0-0.8	0.36/0-0.8	0.36/0-0.8	0.36/0-0.8
Sound Pressure Level (Min-Max)	dB(A)	42 / 35	43 / 35	44 / 38	45 / 40	45 / 40
Condensate Drain Size	in	1	1	1	1	1
Unit Dimension (WxDxH)	in	39 3/8 x 27 9/16 x 11 13/16	39 3/8 x 27 9/16 x 11 13/16	55 1/8 x 27 9/16 x 11 13/16	55 1/8 x 27 9/16 x 11 13/16	55 1/8 x 27 9/16 x 11 13/16
Package Dimension (WxDxH)	in	47 7/16 x 32 x 14 3/16	47 7/16 x 32 x 14 3/16	63 1/16 x 32 x 14 3/8	63 1/16 x 32 x 14 3/8	63 1/16 x 32 x 14 3/8
Weight (Net / Gross)	lbs	94/108	94/108	121/137	121/137	121/137
Line Set Size (Liquid - Gas)	in	3/8 - 5/8	3/8 - 5/8	3/8 - 5/8	3/8 - 5/8	3/8 - 5/8
Power Supply		208-230V / 1Ph / 60Hz				

LIMITED WARRANTY

5 Years Parts, 7 Years Compressor – Residential & Commercial





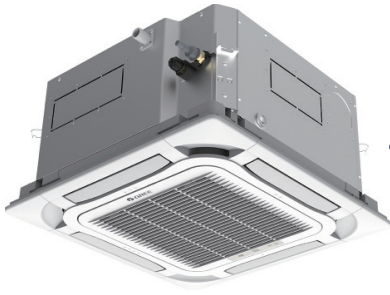
The 360° air supply design provides complete airflow coverage and balanced temperature distribution, making for a more comfortable space.

360 COMPACT CEILING CASSETTE

MODEL		GMV-ND05T/E-T(U)	GMV-ND07T/E-T(U)	GMV-ND09T/E-T(U)	GMV-ND12T/E-T(U)	GMV-ND18T/E-T(U)
System Type		HEAT PUMP				
Cooling Capacity - Nominal	Btu/h	5800	7500	9500	12000	18000
Heating Capacity - Nominal	Btu/h	6200	8500	10500	13500	20000
MCA	A	0.7	0.7	0.7	0.8	0.8
MOP	A	15	15	15	15	15
Air Flow (Min-Max)	CFM	33 / 25	36 / 25	36 / 28	39 / 35	43 / 39
Sound Pressure Level (Min-Max)	dB(A)	35 / 31	35 / 31	36 / 32	40 / 34	42 / 35
Condensate Drain Size	in	1	1	1	1	1
Unit Dimension (WxDxH)	in	22 7/16 x 22 7/16 x 10 7/16	22 7/16 x 22 7/16 x 10 7/16	22 7/16 x 22 7/16 x 10 7/16	22 7/16 x 22 7/16 x 10 7/16	22 7/16 x 22 7/16 x 10 7/16
Package Dimension (WxDxH)	in	27 1/2 x 25 11/16 x 11 5/8	27 1/2 x 25 11/16 x 11 5/8	27 1/2 x 25 11/16 x 11 5/8	27 1/2 x 25 11/16 x 11 5/8	27 1/2 x 25 11/16 x 11 5/8
Weight (Net / Gross)	lbs	38.6/49.6	38.6/49.6	38.6/49.6	38.6/49.6	38.6/49.6
Line Set Size (Liquid - Gas)	in	1/4 - 1/2	1/4 - 3/8	1/4 - 3/8	1/4 - 1/2	3/8 - 5/8
Power Supply		208-230V / 1Ph / 60Hz				
LIMITED WARRANTY		5 Years Parts, 7 Years Compressor – Residential & Commercial				

CASSETTE GRILLE (Required)		TF05	TF05	TF05	TF05	TF05
Grille Dimension (WxDxH)	in	24 3/8 x 24 3/8 x 1 7/8	24 3/8 x 24 3/8 x 1 7/8	24 3/8 x 24 3/8 x 1 7/8	24 3/8 x 24 3/8 x 1 7/8	24 3/8 x 24 3/8 x 1 7/8
Package Dimension (WxDxH)	in	27 5/8 x 27 5/8 x 5	27 5/8 x 27 5/8 x 5	27 5/8 x 27 5/8 x 5	27 5/8 x 27 5/8 x 5	27 5/8 x 27 5/8 x 5
Weight (Net / Gross)	lbs	6.6/10	6.6/10	6.6/10	6.6/10	6.6/10





360° air supply design for a wide air supply range and balanced temperature distribution, more comfortable.

360 STANDARD CEILING CASSETTE

MODEL		GMV-ND07T/C-T(U)	GMV-ND09T/C-T(U)	GMV-ND12T/C-T(U)	GMV-ND15T/C-T(U)	GMV-ND18T/C-T(U)
System Type		HEAT PUMP				
Cooling Capacity - Nominal	Btu/h	7500	9500	12000	15000	18000
Heating Capacity - Nominal	Btu/h	8500	10500	13500	17000	20000
MCA	A	1	1	1	1	1
MOP	A	15	15	15	15	15
Air Flow (Min-Max)	CFM	471 / 353	471 / 353	471 / 353	471 / 353	559 / 441
Sound Pressure Level (Min-Max)	dB(A)	33 / 28	33 / 28	33 / 28	33 / 28	36 / 30
Condensate Drain Size	in	1	1	1	1	1
Unit Dimension (WxDxH)	in	33 1/8 x 33 1/8 x 9 1/2				
Package Dimension (WxDxH)	in	37 7/8 x 37 7/8 x 12 3/4	37 7/8 x 37 7/8 x 12 3/4	37 7/8 x 37 7/8 x 12 3/4	37 7/8 x 37 7/8 x 12 3/4	37 7/8 x 37 7/8 x 12 3/4
Weight (Net / Gross)	lbs	13.2/20.9	13.2/20.9	13.2/20.9	13.2/20.9	13.2/20.9
Line Set Size (Liquid - Gas)	in	1/4 - 3/8	1/4 - 1/2	3/8 - 5/8	3/8 - 5/8	3/8 - 5/8
Power Supply		208-230V / 1Ph / 60Hz				
LIMITED WARRANTY		5 Years Parts, 7 Years Compressor – Residential & Commercial				

MODEL		GMV-ND24T/C-T(U)	GMV-ND30T/C-T(U)	GMV-ND36T/C-T(U)	GMV-ND42T/C-T(U)	GMV-ND48T/C-T(U)
System Type		HEAT PUMP				
Cooling Capacity - Nominal	Btu/h	24000	30000	36000	42000	48000
Heating Capacity - Nominal	Btu/h	27000	34000	40000	47000	54000
MCA	A	1	1	1	1	1
MOP	A	15	15	15	15	15
Air Flow (Min-Max)	CFM	677 / 500	736 / 530	883 / 589	971 / 647	971 / 647
Sound Pressure Level (Min-Max)	dB(A)	37 / 31	39 / 34	41 / 37	43 / 39	43 / 39
Condensate Drain Size	in	1	1	1	1	1
Unit Dimension (WxDxH)	in	33 1/8 x 33 1/8 x 9 1/2	33 1/8 x 33 1/8 x 11 3/8	33 1/8 x 33 1/8 x 11 3/8	33 1/8 x 33 1/8 x 11 3/8	33 1/8 x 33 1/8 x 11 3/8
Package Dimension (WxDxH)	in	37 7/8 x 37 7/8 x 12 3/4	37 7/8 x 37 7/8 x 14 7/8	37 7/8 x 37 7/8 x 14 7/8	37 7/8 x 37 7/8 x 14 7/8	37 7/8 x 37 7/8 x 14 7/8
Weight (Net / Gross)	lbs	63.9/81.6	68.4/83.8	77.2/97	77.2/97	77.2/97
Line Set Size (Liquid - Gas)	in	3/8 - 5/8	3/8 - 5/8	3/8 - 5/8	3/8 - 5/8	3/8 - 5/8
Power Supply		208-230V / 1Ph / 60Hz				
LIMITED WARRANTY		5 Years Parts, 7 Years Compressor – Residential & Commercial				

CASSETTE GRILLE (Required)		TF06	TF06	TF06	TF06	TF06
Grille Dimension (WxDxH)	in	24 3/8 x 24 3/8 x 1 7/8	24 3/8 x 24 3/8 x 1 7/8	24 3/8 x 24 3/8 x 1 7/8	24 3/8 x 24 3/8 x 1 7/8	24 3/8 x 24 3/8 x 1 7/8
Package Dimension (WxDxH)	in	27 5/8 x 27 5/8 x 5	27 5/8 x 27 5/8 x 5	27 5/8 x 27 5/8 x 5	27 5/8 x 27 5/8 x 5	27 5/8 x 27 5/8 x 5
Weight (Net / Gross)	lbs	6.6/10	6.6/10	6.6/10	6.6/10	6.6/10



ONE-WAY CASSETTE



With an ultra-thin design at less than 7-5/16" tall, the unit can be installed in a 7-1/2" ceiling.

MODEL		GMV-ND07TD/A-T(U)	GMV-ND09TD/A-T(U)	GMV-ND12TD/A-T(U)
System Type		HEAT PUMP		
Cooling Capacity - Nominal	Btu/h	7500	9500	12000
Heating Capacity - Nominal	Btu/h	8500	10500	13500
MCA	A	1	1	1
MOP	A	15	15	15
Air Flow (Min-Max)	CFM	353 / 265	353 / 265	353 / 265
Sound Pressure Level (Min-Max)	dB(A)	36 / 28	36 / 28	36 / 28
Condensate Drain Size	in	1	1	1
Unit Dimension (WxDxH)	in	38 7/8 x 15 3/16 x 7	38 7/8 x 15 3/16 x 7	38 7/8 x 15 3/16 x 7
Package Dimension (WxDxH)	in	51 1/2 x 19 3/4 x 12 3/16	51 1/2 x 19 3/4 x 12 3/16	51 1/2 x 19 3/4 x 12 3/16
Weight (Net / Gross)	lbs	44/60	44/60	44/60
Line Set Size (Liquid - Gas)	in	1/4 - 3/8	1/4 - 3/8	1/4 - 1/2
Power Supply		208-230V / 1Ph / 60Hz		
LIMITED WARRANTY		5 Years Parts, 7 Years Compressor – Residential & Commercial		

CASSETTE GRILLE (Required)		TD01	TD01	TD01
Grille Dimension (WxDxH)	in	47 1/4 x 18 1/8 x 2 3/16	47 1/4 x 18 1/8 x 2 3/16	47 1/4 x 18 1/8 x 2 3/16
Package Dimension (WxDxH)	in	49 13/16 x 21-1/8 x 4 3/4	49 13/16 x 21 1/8 x 4 3/4	49 13/16 x 21 1/8 x 4 3/4
Weight (Net / Gross)	lbs	9.3/13.2	9.3/13.2	9.3/13.2



The two-way cassette unit has a very thin body (11 inches) which is more practical in field applications as less installation space is required.

TWO-WAY CASSETTE

MODEL		GMV-ND09TS/B-T(U)	GMV-ND12TS/B-T(U)	GMV-ND15TS/B-T(U)	GMV-ND18TS/B-T(U)	GMV-ND24TS/B-T(U)
System Type		HEAT PUMP				
Cooling Capacity - Nominal	Btu/h	9500	12000	15000	18000	24000
Heating Capacity - Nominal	Btu/h	10500	13500	17000	20000	27000
MCA	A	1	1	1	1	1
MOP	A	15	15	15	15	15
Air Flow (Min-Max)	CFM	395 / 363 / 302	395 / 363 / 302	421 / 363 / 302	450 / 417 / 398	480 / 438 / 388
Sound Pressure Level	dB(A)	33 / 31 / 28	33 / 31 / 28	35 / 31 / 28	37 / 35 / 32	39 / 37 / 34
Dehumidification	pt/hr	2.96	3.8	5.28	5.28	5.28
Condensate Drain Size	in	1	1	1	1	1
Unit Dimension (WxDxH)	in	31 1/8 x 24 13/16 x 11	31 1/8 x 24 13/16 x 11	31 1/8 x 24 13/16 x 11	31 1/8 x 24 13/16 x 11	31 1/8 x 24 13/16 x 11
Package Dimension (WxDxH)	in	40 5/8 x 29 1/8 x 14 3/8	40 5/8 x 29 1/8 x 14 3/8	40 5/8 x 29 1/8 x 14 3/8	40 5/8 x 29 1/8 x 14 3/8	40 5/8 x 29 1/8 x 14 3/8
Weight (Net / Gross)	lbs	56/74	56/74	56/74	57/76	57/76
Line Set Size (Liquid - Gas)	in	1/4 - 3/8	1/4 - 1/2	1/4 - 1/2	3/8 - 5/8	3/8 - 5/8
Power Supply		208-230V / 1Ph / 60Hz				
LIMITED WARRANTY		5 Years Parts, 7 Years Compressor – Residential & Commercial				

CASSETTE GRILLE (Required)		TE03	TE03	TE03	TE03	TE03
Grille Dimension (WxDxH)	in	43 5/16 x 28 x 1 3/32	43 5/16 x 28 x 1 3/32	43 5/16 x 28 x 1 3/32	43 5/16 x 28 x 1 3/32	43 5/16 x 28 x 1 3/32
Package Dimension (WxDxH)	in	48 7/16 x 33 3/16 x 5 1/8	48 7/16 x 33 3/16 x 5 1/8	48 7/16 x 33 3/16 x 5 1/8	48 7/16 x 33 3/16 x 5 1/8	48 7/16 x 33 3/16 x 5 1/8
Weight (Net / Gross)	lbs	13/23	13/23	13/23	13/23	13/23



Installed low on a wall, it is perfect for knee-walls and radiator-style installations.

CONSOLE

MODEL		GMV-ND07C/A-T(U)	GMV-ND09C/A-T(U)	GMV-ND12C/A-T(U)	GMV-ND18C/A-T(U)
System Type		HEAT PUMP			
Cooling Capacity - Nominal	Btu/h	7500	9500	12000	18000
Heating Capacity - Nominal	Btu/h	8500	11000	13500	20000
MCA	A	1	1	1	1
MOP	A	15	15	15	15
Air Flow (Min-Max)	CFM	235 / 159	235 / 159	282 / 182	400 / 294
Sound Pressure Level (Min-Max)	dB(A)	38 / 27	38 / 27	40 / 32	46 / 39
Condensate Drain Size	in	1	1	1	1
Unit Dimension (WxDxH)	in	27 9/16 x 8 1/2 x 23 5/8	27 9/16 x 8 1/2 x 23 5/8	27 9/16 x 8 1/2 x 23 5/8	27 9/16 x 8 1/2 x 23 5/8
Package Dimension (WxDxH)	in	31 x 11 1/8 x 30 5/8	31 x 11 1/8 x 30 5/8	31 x 11 1/8 x 30 5/8	31 x 11 1/8 x 30 5/8
Weight (Net / Gross)	lbs	35/42	35/42	35/42	35/42
Line Set Size (Liquid - Gas)	in	1/4 - 3/8	1/4 - 3/8	1/4 - 1/2	1/4 - 1/2
Power Supply		208-230V / 1Ph / 60Hz			
LIMITED WARRANTY		5 Years Parts, 7 Years Compressor – Residential & Commercial			



The unit can be ceiling or floor mounted. Excellent air throw when ceiling mounted.

FLOOR CEILING

MODEL		GMV-ND09ZD/A-T(U)	GMV-ND12ZD/A-T(U)	GMV-ND18ZD/A-T(U)	GMV-ND24ZD/A-T(U)
System Type		HEAT PUMP			
Cooling Capacity - Nominal	Btu/h	9500	12000	18000	24000
Heating Capacity - Nominal	Btu/h	10500	13500	20000	27000
MCA	A	1	1	1	1
MOP	A	15	15	15	15
Air Flow (Min-Max)	CFM	471 / 353	471 / 353	471 / 353	471 / 353
Sound Pressure Level (Min-Max)	dB(A)	33 / 28	33 / 28	33 / 28	33 / 28
Condensate Drain Size	in	1	1	1	1
Unit Dimension (WxDxH)	in	48 x 8 7/8 x 27 9/16	48 x 8 7/8 x 27 9/16	48 x 8 7/8 x 27 9/16	56 x 9 5/8 x 27 9/16
Package Dimension (WxDxH)	in	52 7/8 x 12 3/8 x 32 3/8	52 7/8 x 12 3/8 x 32 3/8	52 7/8 x 12 3/8 x 32 3/8	60 15/16 x 13 9/16 x 32 5/8
Weight (Net / Gross)	lbs	13.2/20.9	13.2/20.9	13.2/20.9	13.2/20.9
Line Set Size (Liquid - Gas)	in	1/4 - 3/8	1/4 - 1/2	3/8 - 5/8	3/8 - 5/8
Power Supply		208-230V / 1Ph / 60Hz			
LIMITED WARRANTY		5 Years Parts, 7 Years Compressor – Residential & Commercial			

MODEL		GMV-ND30ZD/A-T(U)	GMV-ND36ZD/A-T(U)	GMV-ND42ZD/A-T(U)	GMV-ND48ZD/A-T(U)
System Type		HEAT PUMP			
Cooling Capacity - Nominal	Btu/h	30000	36000	42000	48000
Heating Capacity - Nominal	Btu/h	33000	40000	47000	54000
MCA	A	1	1	1	1
MOP	A	15	15	15	15
Air Flow (Min-Max)	CFM	1230 / 970	1260 / 1000	1800 / 1500	1820 / 1530
Sound Pressure Level (Min-Max)	dB(A)	45 / 42	46 / 43	50 / 48	51 / 49
Condensate Drain Size	in	1	1	1	1
Unit Dimension (WxDxH)	in	56 x 9 5/8 x 27 9/16	66 15/16 x 9 5/8 x 27 9/16	66 15/16 x 9 5/8 x 27 9/16	66 15/16 x 9 5/8 x 27 9/16
Package Dimension (WxDxH)	in	60 15/16 x 13 9/16 x 32 5/8	71 15/16 x 13 9/16 x 32 5/8	71 15/16 x 13 9/16 x 32 5/8	71 15/16 x 13 9/16 x 32 5/8
Weight (Net / Gross)	lbs	110/128	132/150	132/150	132/150
Line Set Size (Liquid - Gas)	in	3/8 - 5/8	3/8 - 5/8	3/8 - 5/8	3/8 - 5/8
Power Supply		208-230V / 1Ph / 60Hz			
LIMITED WARRANTY		5 Years Parts, 7 Years Compressor – Residential & Commercial			








FRESH AIR FAN COILS

INDOOR UNIT MODEL	OUTDOOR UNIT MODEL
GMV-NDX42P/A-T(U)	
GMV-NDX48P/A-T(U)	Total capacity of connected fresh air fan-coils and indoor units must be within 50% - 100% of the capacity of the outdoor unit.
GMV-NDX54P/A-T(U)	Total capacity of connected fresh air fan-coils cannot exceed 30% of the capacity of the outdoor unit.
GMV-NDX72P/A-T(U)	
GMV-NDX96P/A-T(U)	

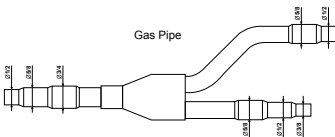
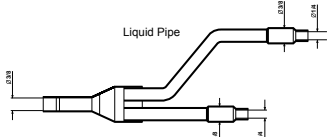
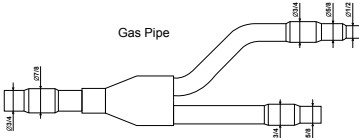
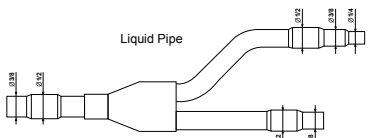
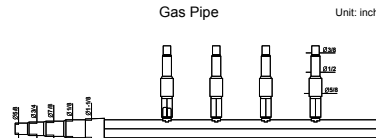
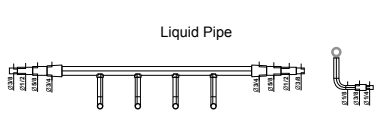
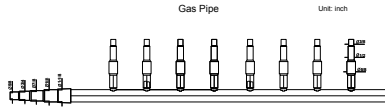
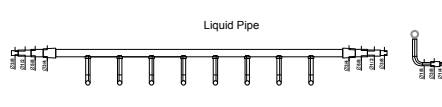
- Fresh air processing unit
- Applications for residential homes, villas business buildings, hotels, apartments
- Can be combined with Gree GMV5
- The unit controls refrigerant output according to actual needs to ensure constant airflow temperature
- Adjusts power output so that high power operation during light-load conditions are avoided. 589 - 2060 CFM
- Up to 0.8 inch. W.G. for 42.48
- Up to 1.2 inch W.G. for 54.72.96



CONTROLS & ACCESSORIES

MODEL NUMBER	CONTROLLER	STANDARD	COMPATIBLE WITH	KEYPAD FEATURES & FUNCTIONS
YAPIF		INCLUDED	HIGH WALL CEILING CASSETTES FLOOR CEILING CONSOLE	Wireless Remote Controller <ul style="list-style-type: none"> Included with all ductless units including High Wall, Ceiling Cassettes, Floor Ceiling, and Consoles Includes all operation features such as mode selection, fan speeds, setpoint control, timers, sleep, and more
XK79		NONE	ALL INDOOR UNIT TYPES	Gate Control Wired Controller (With Remote On/Off) (Non-programmable) <ul style="list-style-type: none"> Includes all operation features such as mode selection, fan speeds, setpoint control, timers, sleep, and more Enables access to user and engineering parameters and can display all troubleshooting data Remote operation interface built in. Connect to door switches, motion sensors, and more
XE70-33/H		MULTI-POSITION AIR HANDLER	ALL INDOOR UNIT TYPES	7-Day Programmable Wired Controller with Gate Control (Remote On/Off) <ul style="list-style-type: none"> Included with Multi-Position Air Handler Capacitive touch screen ensures long life Seven Day programmable. Set up to 4 weekly schedules and enable or disable specific days within a schedule Remote operation interface built in. Connect to door switches, motion sensors, and more Enables access to user and engineering parameters and can display all troubleshooting data including indoor and outdoor data Includes all operation features such as mode selection, fan speeds, setpoint control, timers, sleep, and more
CE52-24/F(C)		NONE	ALL INDOOR UNIT TYPES	E-Smart Zone Central Controller <ul style="list-style-type: none"> Allows central control of up to 16 systems and 32 indoor units Seven Day programmable. Set up to 4 weekly schedules and enable or disable specific days within a schedule Operate and schedule individual units or set multiple groups of units to be controlled at the same time Customizable names and icons for each zone Easy-to-read color touchscreen (3-3/8"H x 5"W). Only 7/16" thick when flush-mounted Includes galvanized mounting box with grommets for non-flush-mount installation (1-1/2" thick) Independent power supply (100-240V)
ME32-33/H		NONE	ALL INDOOR UNIT TYPES	Universal 24V Adapter with Dry Contact Interface <ul style="list-style-type: none"> Enables use of your favorite third-party 24VAC thermostat or control system Up to three fan speeds (G1, G2, G3) Four sets of dry contacts are available for broad control including remote on/off, emergency shut down, and more 24V transformer is required unless installed with a Multi-Position Air Handler

Y-BRANCHES AND HEADERS

FQ01AA	 <p>Gas Pipe</p>  <p>Liquid Pipe</p>	<ul style="list-style-type: none"> Y Branch for GMV5 capacity <68,000
FQ01BA	 <p>Gas Pipe</p>  <p>Liquid Pipe</p>	<ul style="list-style-type: none"> Y Branch for GMV5 capacity >68,000 - 102,000
FQ14/H1	<p>Gas Pipe</p>  <p>Unit: inch</p> <p>Liquid Pipe</p> 	<ul style="list-style-type: none"> T-Type 4 port Manifold <134,000
FQ18/H1	<p>Gas Pipe</p>  <p>Unit: inch</p> <p>Liquid Pipe</p> 	<ul style="list-style-type: none"> T-Type 8 port Manifold <272,000